



Accessible India - Empowered India



ANAND SALES INDIA

ISO 9001:2015 Certified

ADA Braille Signs | Braille & Tactile Layout Plans
Self Adhesive PU Tactile Tiles | SS Studs & Strips
Handrails Braille Indicator

anandsalesindia@gmail.com
www.braillesign.in

“ We feel pleasure to introduce ourselves as a leading manufacturer of Accessible products viz Braille Signs as per ADA, Layout Plans, PU Tactile Tiles, Audio Braille Signage, Handrails, Grab Bars, Accessible Parking Signs, Entrance Signage & Toilet Alarm System.

We are already supplying the above items to the Haryana and Punjab P.W.D. Departments, executed several works of Accessible India Campaign in Haryana State and for several Govt Contractors.

We have our own manufacturing unit at Industrial Shed No. 345, Industrial Area Focal Point, Phase-IX, Mohali – 160 062.”

FARIDABAD

- Accessible India Campaign in Labour Court Complex, Sector 12, Faridabad.
- Accessible India Campaign in Mini Secretariat Building, Sector 12, Faridabad.
- Accessible India Campaign in Govt. ITI in NIT-5, Faridabad.
- Accessible India Campaign in Govt. College for Women in Sector 16-A, Faridabad
- Accessible India Campaign in Judicial Complex in Sector 12, Faridabad.
- Accessible India Campaign in Pollution Control Board Building in Sector 16-A, Faridabad.
- Accessible India Campaign in Girls Hostel in YMCA Institute of Sciences and Engineering Faridabad.
- Accessible India Campaign in Govt. ITI in Sector 18, Faridabad.

GURUGRAM

- Accessible India Campaign in Govt. School, Gurugram
- Accessible India Campaign in Civil Hospital, Sector 10, Gurugram
- Accessible India Campaign in Mini Secretariat & Electricity Office, Kadipur, Gurugram.
- Accessible India Campaign in Judicial Complex, Gurugram
- Accessible India Campaign in Pedestrian Subway of NH-8, Stretch Passing through Near Ambiance Mall, Gurugram.

HARYANA POLICE HOUSING CORPORATION

- Accessible India Campaign in Police Station, Sector 20, Panchkula
- Accessible India Campaign in Police Station Pinjore & Raipur Rani.
- Accessible India Campaign in Police Post Lal Kurti, Ambala Cantt.
- Accessible India Campaign in Police Station, Sector 5, Panchkula.
- Accessible India Campaign in City, Sadar & Women Police Station in Civil Lines, Distt. Kaithal
- Accessible India Campaign in Various Police Station and Mitra Kaksh in Distt. Karnal.
- Accessible India Campaign in DAV Police Public School in Police Lines, Faridabad.
- Accessible India Campaign in Various Police Station, Distt. Sonipat.
- Accessible India Campaign in Various Police Station and Mitra Kaksh in Distt. Panipat.

OTHERS

- Accessible India Campaign in Nirman Sadan, Sector 33, Chandigarh
- Accessible India Campaign in Mini Secretariat, Jaipur.
- Accessible India Campaign in Session Court, Jaipur, Metro, Banipark, Jaipur.
- Accessible India Campaign in Mini Secretariat, Phase-1, Rohtak.
- Accessible India Campaign in Session Court, Jaipur, Metro, Banipark, Jaipur.
- Accessible India Campaign in Tehsil Building, Rohtak.
- Accessible India Campaign in Siksha Sadan Building Sector 5, Panchkula.
- Accessible India Campaign in Candor Kolkata One Hi-Tech Structures Pvt. Ltd., Dundahera Sector, 21, Gurgaon
- Accessible India Campaign in Candor Gurgaon One Realty Pvt. Sector 48, Gurgaon.

Braille is a specialized tactile writing system developed for people with visual impairments.

Nowadays, braille language is increasingly being used and made part of wayfinding and informational signs installed in public spaces, such as hospitals, government buildings, office buildings and airports.

The raised dots embossed on these signs create recognizable characters, that help the users comprehend the text by feeling the dots.

Examples of signs displayed with braille include directional signs, public conveniences signs, exit signs, room number or other information.



Anand Sales (India) is India's leading and experienced custom ADA Braille Signs manufacturer. Our braille signs are developed in full compliance with the guidelines laid down by the Americans with Disabilities Act (ADA). We use sophisticated automated manufacturing processes that ensure high level of accuracy and precision.

Tactile Paving is a system of texturing the floor ground surface to assist pedestrians who are visually impaired to complete their journey with ease and confidence.

These tiles provide guidance and help convey important information such as clues, directions or warnings. The raised surfaces and markers on these tiles can be detected by canes.

The Self Adhesive PU Tactile is a relatively new and unique concept in India, developed to overcome the excessive costs of installing traditional ceramic tiles. These can be easily installed on any type of existing surface in no time, by peel-and-bond technology.

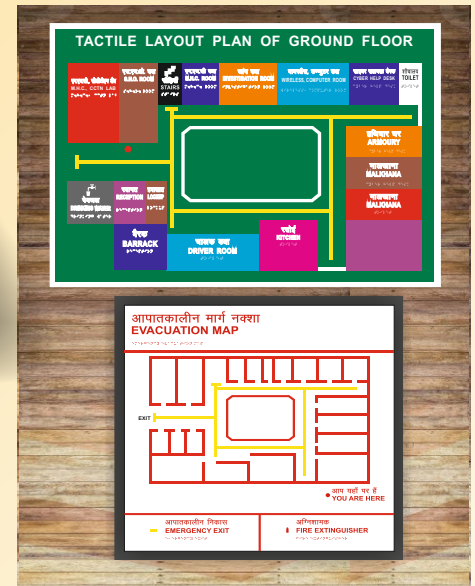
These tiles are ideal for creating a barrier-free environment. By providing visual and tactile contrast, guide paths form a vast web of interconnected points of interest, enabling easy navigation.

Dimensions: PU Tactile tile is manufactured in a standard size of 300x300mm with a square edge to ensure tight joints with minimal gaps.



Audio, Pictorial & Evacuation Layout Plan

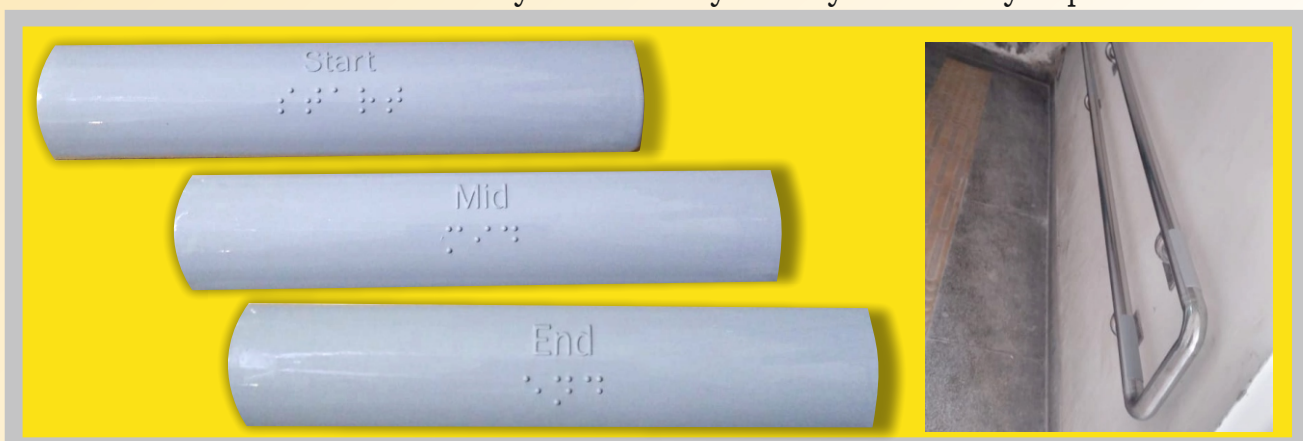
Braille layout plans are essentially guide maps of the entire building written in braille language, which helps people with restricted or limited visual ability to understand the building layout. This can be especially helpful for large buildings with complex layouts or in emergency situations, as these braille layout plans can be used to identify exit locations.



We provide the option to design and manufacture customized 3D braille layout plans in a variety of colour, size and surface options to meet individual requirements.

Braille Handrail Signs

Braille Handrail signs are commonly installed on staircase handrails and ramps to help visually impaired users of essential way-finding information such as climbing directions, floor locations, sudden turns, warnings about obstructions or any other information as the situation demands. These informational messages are embossed with braille on the inside of the handrail so that they can be easily read by the visually impaired.



Accessible Toilet



Differently-Abled W/C Alarm System

This Differently-abled Alarm systems is available as a single zone kit which can be expanded upto 3 zone. It has been designed for use in differently-abled persons/old person in case of emergency /panic. It meets the requirements of BS8300.

Features

- Wireless operations
- Control Panel supporting upto 3 zone
- LED indication on control Panel
- Easy to use
- Auto shutdown function to save battery power.
- Provided with Differently-abled W/C Braille Sign.



Ideally Suitable for

Health Centers, Public Buildings, Govt. Offices, Care Homes, Schools, Cinema, Sports facility & Commercial Building.

Specification

- | | |
|------------------------------------|---|
| ➤ Battery-23A 12V. | ➤ Frequency -433.92 |
| ➤ Range - 70-100 Mtrs. | ➤ MHZ.Modulation- AM |
| ➤ Working voltage- DC 12V/230 V AC | ➤ Transmitted Distance- 100 Mtrs. in open area. |
| ➤ Working Current - 10MA | ➤ Body Type ABS/Acrylic Dome. |
| | ➤ Reminder Mode- Blink and Beep |

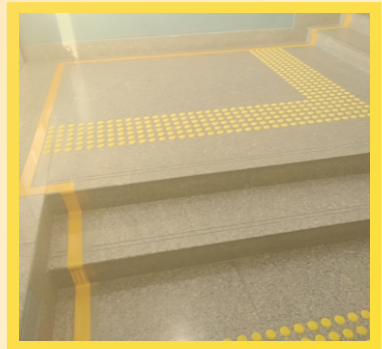
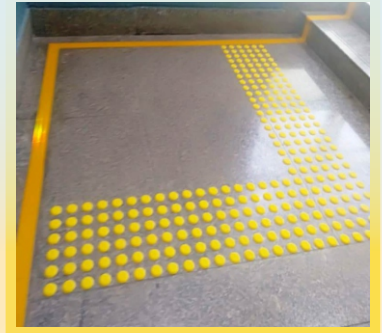
Pu Tactile Studs & Directional Strip

Tactiles are unique non-fade, non-slip ground surface indicators. These indicators provide cues, which combined with others environmental information, assist visually challenged people with their orientation.

Hi-Traffic Tactile collection has been designed with emphasis on reliability, safety, dignity and independence for visually challenged people. Tactile means information and interpretations derived from the sense of touch. This involves sensory transfer through physical contact of the hands or feet with other surfaces, as well as sensory transfers received by contact with non-physical elements such as pressure, wind and temperature.

Tactile paving/tiles- (also called Tactile Ground Surface Indicators) provide a distinctive surface pattern of Strips and Studs detectable by long cane or underfoot which are used to guide/alert persons with vision impairments of their approach to facilities, streets and hazardous drop-offs.

Bright Polyurethane Tactile Studs enhance the visual effectiveness and attractiveness of your walk and entrance ways, providing exceptional slip resistance & are esthetically pleasing as well. Also referred to as Hazard



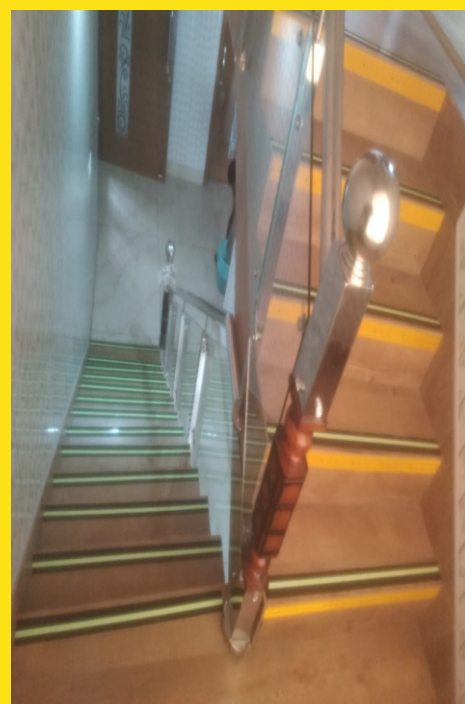
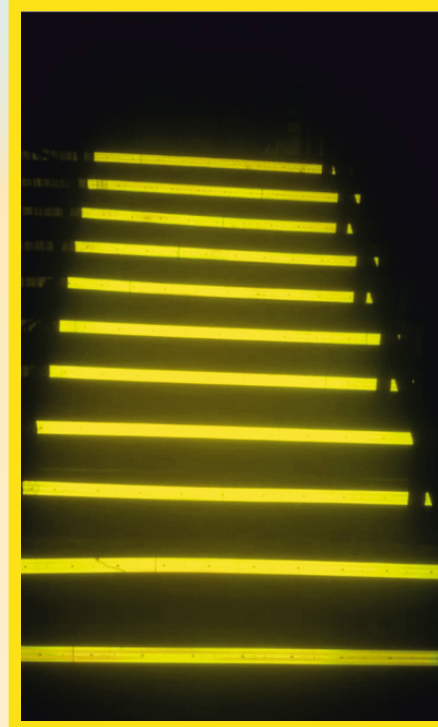
SS Studs and Directional Strips



Stairs Edge Strips & Conspicuity Tapes

Climbing a flight of stairs for individuals with limited visibility can be a challenge and also a major safety hazard. In fact, one of the highest causes for accidents on stairways is poor visibility of both risers and treads. To combat this problem, contemporary building codes require installation of high visibility reflective Edge Strips on treads and risers of the stairs.

These high contrast Edge Strips are installed across the full width of each step-tread and help clearly delineate the tread edge from the rest of the tread. By increasing the visibility of each stair, these edge strips help decrease incidences of accidents through tripping or slipping.





Anand Sales (India)

ISO 9001:2015 Certified

SCO 73, Sector 31-C, Chandigarh - 160030

+91 98140-55124 | +91 172-2638510

anandsalesindia@gmail.com

www.braillesign.in